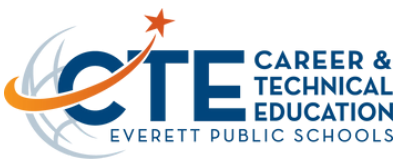




CTE COURSE STUDENT GUIDE



WWW.EVERETTSD.ORG/CTE
CTE@EVERETTSD.ORG

How does CTE help me?

WHY

In today's world, it is critical to ensure students are career and college ready. CTE strives to make sure students experience enough academic rigor to prepare them for post-high school education, but also with enough skills and appropriate certification or experience to join the workforce right after graduation.

CTE programs provide students with the tools to be career ready!

WHAT

CTE provides content to students that has been vetted by industry members as relevant to the workforce. CTE courses provide students with the ability to graduate career ready, or college ready, whatever their choice may be.

CTE courses provide students with the opportunity to earn Industry Certifications, to experience Career Technical Student Organizations, like DECA or Skills USA, to benefit from work-based learning opportunities and to learn unique technical skills.

Work-based Learning

Research shows students who participate in work-based learning may show improved academic achievement and will acquire real workplace experience and employability skills

All CTE courses provide WBL opportunities to our students.

Options are:

- Career research
- Job interviews/job shadow
- Guest speakers
- School-based enterprises
- Placement in paid or unpaid internships
- Apprenticeships
- Ownership/Entrepreneurship
- Course related service learning projects

Industry Recognized Certs

IRCs provide students with real work certifications that transfer seamlessly to their post high school career goals.

IRCs are recognized by industry members as relevant certifications students may need once in the workforce.

Our aligned curriculum and/or resources provided by CTE includes these IRCs, which can be identified in this student guide via the green certificate icons.



Career & Technical Education Graduation Pathways



AGRICULTURE EDUCATION & SCIENCE

Courses include:
Sustainable Agriculture, Biology and the Environment
and AP Environmental Science.



BUSINESS & MARKETING

Courses include:
Business Finance, Accounting, Economics, Entrepreneurship,
Foundations of Business & Marketing, Business Law, Web
Design, Microsoft User Specialist, Intro to Programming
and AP Computer Science.



FAMILY & CONSUMER SCIENCES

Courses include:
Child Development, Introduction to Education,
Independent Living, Nutrition & Wellness,
Nutrition & Food Prep, Family Health, AP Psychology and
Family & Consumer Sciences Coop (for early Child Care Basics).



HEALTH SCIENCES

Courses include:
Intro to Health Science Careers, Medical Terminology,
Biomanufacturing, Biotechnology, Home Care Aide,
Anatomy & Physiology and Sports Medicine I & II.



SKILLED & TECHNICAL SCIENCES

Courses include:
NJROTC, Graphic Design, AP 2-D/3D Art & Design, AP Drawing,
Video Game Design, Video Production, Digital Photography,
Robotics Tech, Robotics & Mechatronics, Automotive Tech,
Automotive Maintenance, Manufacturing and Theater Tech.



STEM

Courses include:
Astronomy & Aerospace, AP Physics, Engineer Your World
and Physics in the Universe.

Agriculture Education & Science Career Opportunities

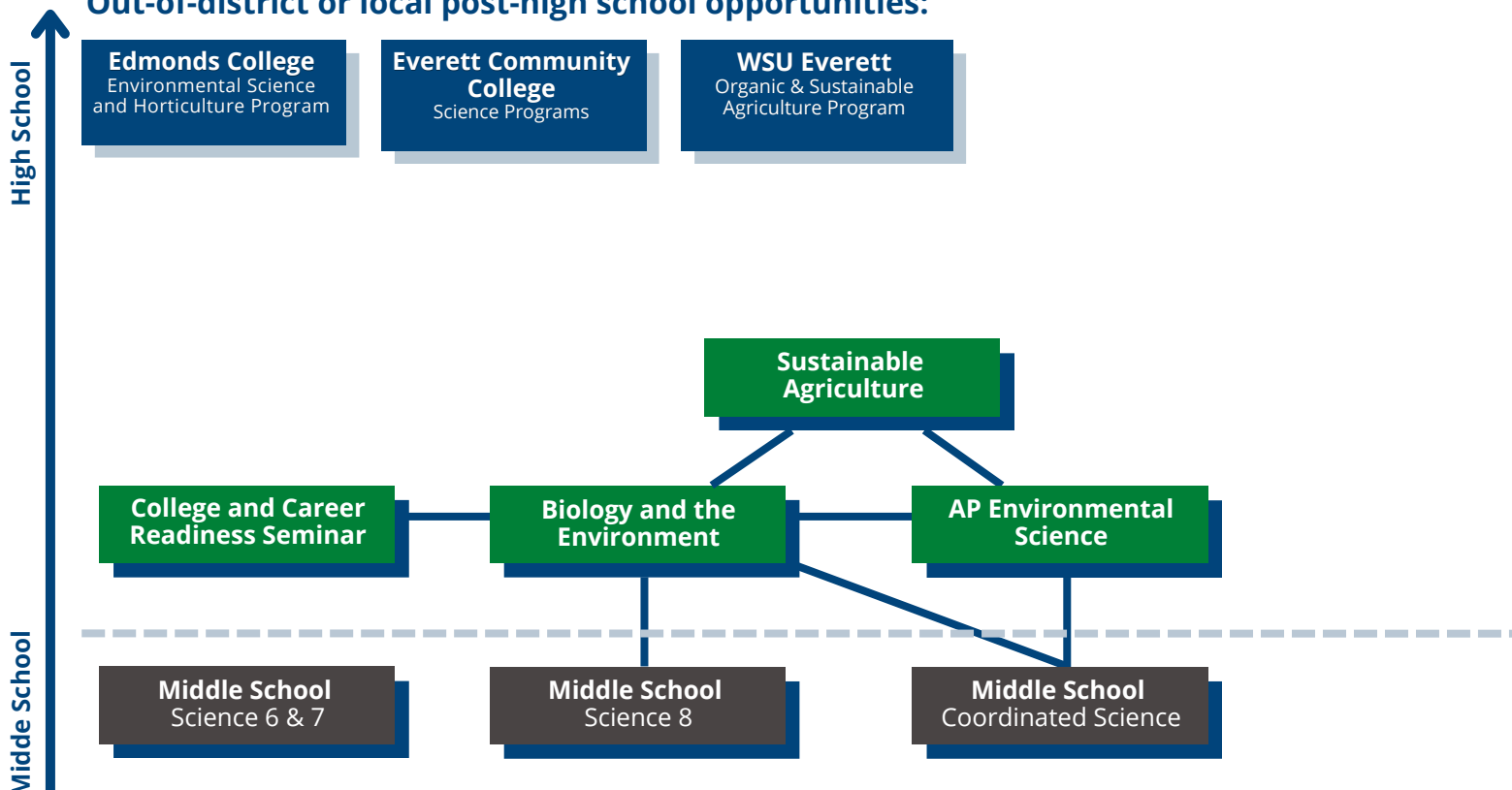
Below are potential jobs and average salaries that you might enjoy based on courses taken in the Agriculture Education & Science Careers.

Landscape Designer ~ \$57,000	Pest Control Manager ~ \$40,000	Wildlife Biologist ~ \$72,000
Agricultural Manager ~ \$68,000	Environmental Specialist ~ \$54,000	Agricultural Sales Rep ~ \$65,000
Crop Consultant ~ \$50,000	Agronomist ~ \$67,000	Agricultural Journalist ~ \$35,000

In your High School & Beyond Plan, if you have selected a CTE graduation pathway, you must earn 2.0 credits in that pathway. For **Agriculture Education & Science**, choices below are indicated in **green**. This will meet CTE math and ELA graduation requirements.



Out-of-district or local post-high school opportunities:



CTE Graduation Pathways Color Code

■ Skilled & Technical Sciences	■ Family & Consumer Sciences	■ Agriculture Education & Science	■ Health Sciences	■ Business & Marketing	■ STEM
---	--	--	--	--	--

Everett Public Schools does not discriminate in any programs or activities on the basis of sex, race, creed, religion, color, national origin, age, veteran or military status, sexual orientation, gender expression or identity, disability, or the use of a trained dog guide or service animal and provides equal access to the Boy Scouts and other designated youth groups. The following employees have been designated to handle questions and complaints of alleged discrimination: Title IX/Civil Rights Compliance Officer: Kevin Allen, 425-385-4100, KAllen@everettsd.org, PO Box 2098, Everett WA 98213 Section 504 Coordinator: Dave Peters, 425-385-4063, DPeters@everettsd.org, PO Box 2098, Everett WA 98213 ADA Coordinator: Randi Seaberg, 425-385-4104, RSeaberg@everettsd.org, PO Box 2098, Everett WA 98213

Business & Marketing Career Opportunities

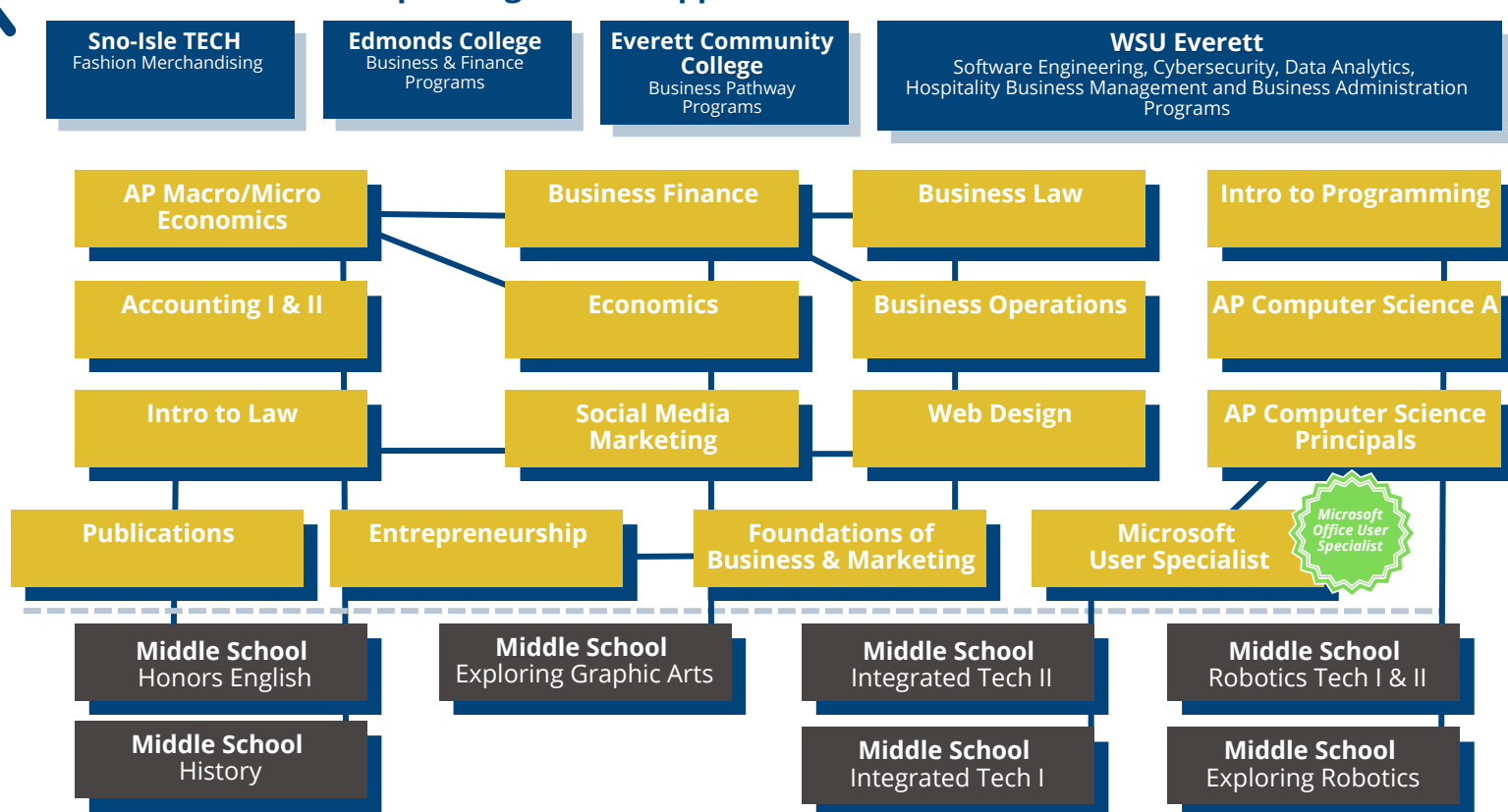
Below are potential jobs and average salaries that you might enjoy based on courses taken in the Business & Marketing Pathway.

Social Media Marketing Coordinator ~\$39,000	Marketing Assistant ~ \$48,000	Marketing Executive ~ \$51,000
SEO Specialist ~ \$45,000	Marketing Analyst ~ \$60,000	Digital Marketing Coordinator ~ \$60,000
Content Marketer ~\$61,000	Director of Marketing ~ \$80,000	Product Marketing Manager ~ \$95,000

In your High School & Beyond Plan, if you have selected a CTE graduation pathway, you must earn 2.0 credits in that pathway. For **Business & Marketing**, choices below are indicated in **yellow**. This will meet CTE math and ELA graduation requirements.



Out-of-district or local post-high school opportunities:



CTE Graduation Pathways Color Code

■ Skilled & Technical Sciences

■ Family & Consumer Sciences

■ Agriculture Education & Science

■ Health Sciences

■ Business & Marketing

■ STEM

Everett Public Schools does not discriminate in any programs or activities on the basis of sex, race, creed, religion, color, national origin, age, veteran or military status, sexual orientation, gender expression or identity, disability, or the use of a trained dog guide or service animal and provides equal access to the Boy Scouts and other designated youth groups. The following employees have been designated to handle questions and complaints of alleged discrimination: Title IX/Civil Rights Compliance Officer: Kevin Allen, 425-385-4100, KAllen@everettsd.org, PO Box 2098, Everett WA 98213 Section 504 Coordinator: Dave Peters, 425-385-4063, DPeters@everettsd.org, PO Box 2098, Everett WA 98213 ADA Coordinator: Randi Seaberg, 425-385-4104, RSeaberg@everettsd.org, PO Box 2098, Everett WA 98213

Family & Consumer Sciences Career Opportunities

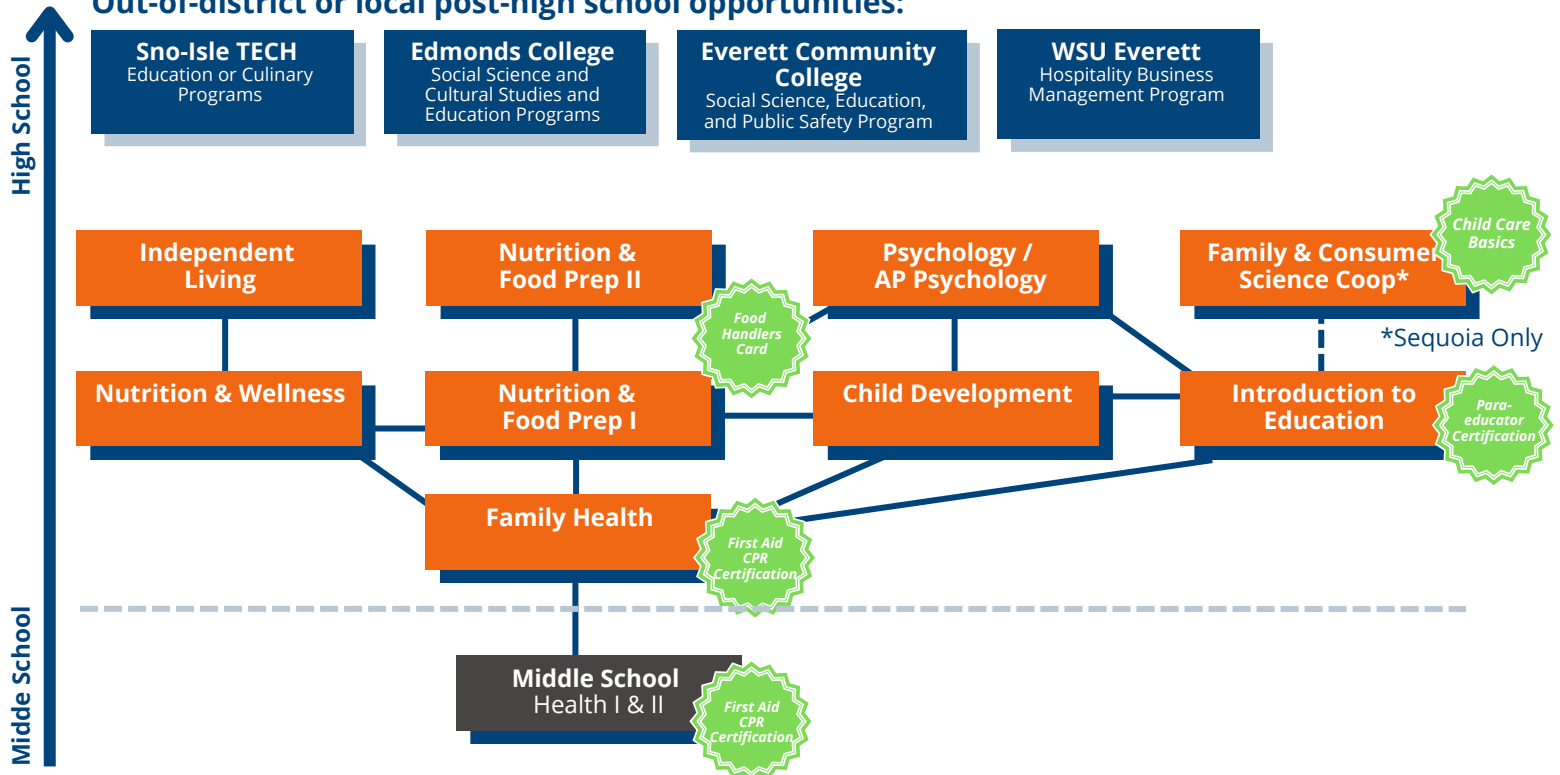
Below are potential jobs and average salaries that you might enjoy based on courses taken in the Family & Consumer Sciences Pathway.

Teacher ~ \$75,000	Youth Program Coordinator ~ \$35,000	Wellness Specialist ~ \$41,000
Child Care Director ~ \$43,000	Substance Abuse Counselor ~ \$46,000	Recruitment Specialist~ \$56,000
Child Life Specialist ~\$56,000	Occupational Therapist~ \$82,000	Psychologist ~ \$95,000

In your High School & Beyond Plan, if you have selected a CTE graduation pathway, you must earn 2.0 credits in that pathway. For **Family & Consumer Sciences**, choices below are indicated in **orange**. This will meet CTE math and ELA graduation requirements.



Out-of-district or local post-high school opportunities:



CTE Graduation Pathways Color Code

 Skilled & Technical Sciences	 Family & Consumer Sciences	 Agriculture Education & Science	 Health Sciences	 Business & Marketing	 STEM
--	--	---	---	--	--

Everett Public Schools does not discriminate in any programs or activities on the basis of sex, race, creed, religion, color, national origin, age, veteran or military status, sexual orientation, gender expression or identity, disability, or the use of a trained dog guide or service animal and provides equal access to the Boy Scouts and other designated youth groups. The following employees have been designated to handle questions and complaints of alleged discrimination: Title IX/Civil Rights Compliance Officer: Kevin Allen, 425-385-4100, KAllen@everettsd.org, PO Box 2098, Everett WA 98213 Section 504 Coordinator: Dave Peters, 425-385-4063, DPeters@everettsd.org, PO Box 2098, Everett WA 98213 ADA Coordinator: Randi Seaberg, 425-385-4104, RSeaberg@everettsd.org, PO Box 2098, Everett WA 98213

Health Sciences Career Opportunities

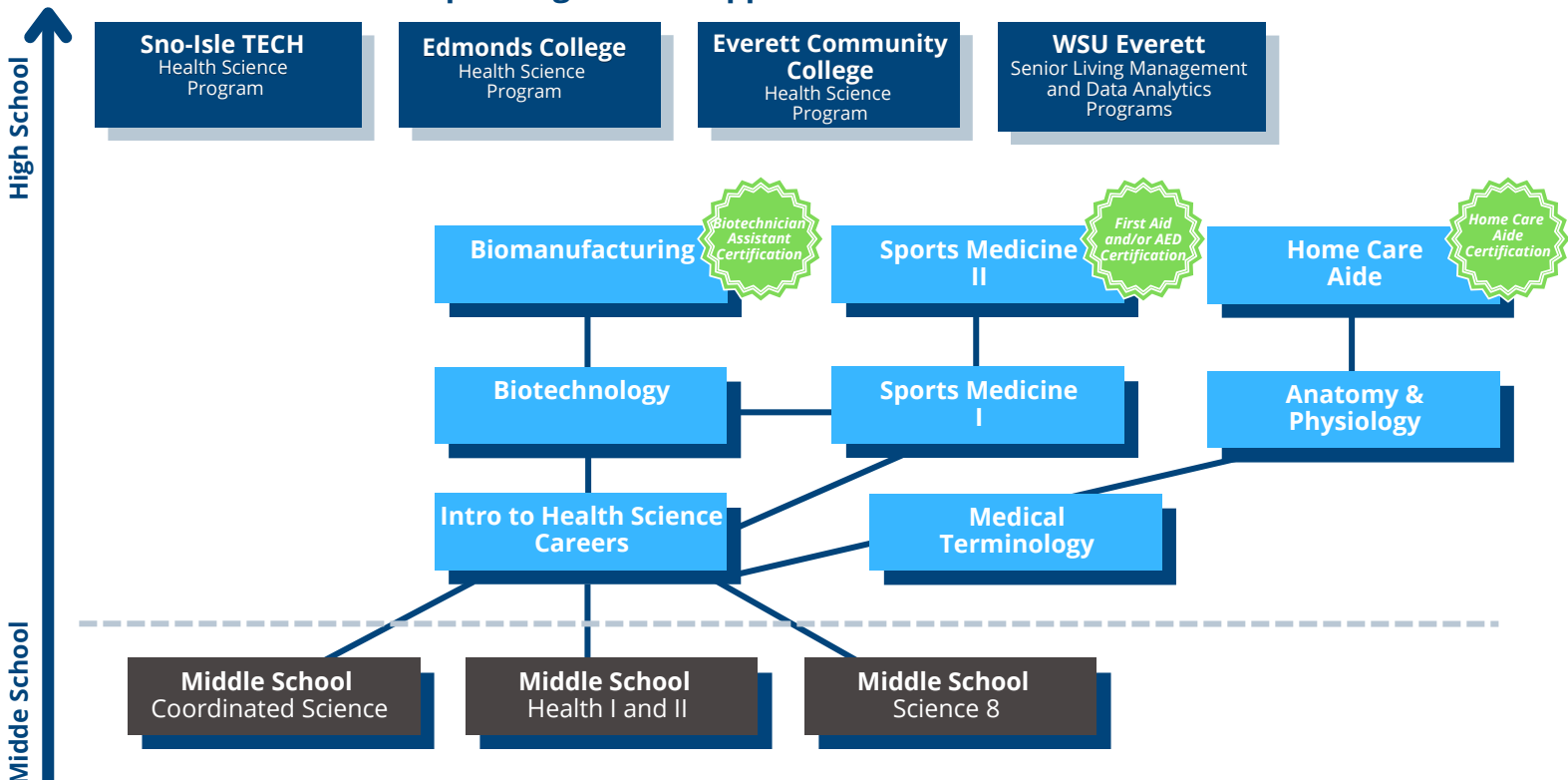
Below are potential jobs and average salaries that you might enjoy based on courses taken in the Health Sciences Pathway.

Care Coordinator ~ \$35,000	Patient Representative ~ \$38,000	Health Care Administrator ~ \$72,000
Public Health Nurse ~ \$69,000	Occupational Therapist ~ \$81,000	Medical Translator ~ \$57,000
Biomedical Engineer ~\$81,000	Home Care Aide ~ \$43,000	Biotech Technician ~ \$50,000

In your High School & Beyond Plan, if you have selected a CTE graduation pathway, you must earn 2.0 credits in that pathway. For **Health Sciences**, choices below are indicated in **blue**. This will meet CTE math and ELA graduation requirements.



Out-of-district or local post-high school opportunities:



CTE Graduation Pathways Color Code

■ Skilled & Technical Sciences	■ Family & Consumer Sciences	■ Agriculture Education & Science	■ Health Sciences	■ Business & Marketing	■ STEM
---	--	--	---	--	--

Everett Public Schools does not discriminate in any programs or activities on the basis of sex, race, creed, religion, color, national origin, age, veteran or military status, sexual orientation, gender expression or identity, disability, or the use of a trained dog guide or service animal and provides equal access to the Boy Scouts and other designated youth groups. The following employees have been designated to handle questions and complaints of alleged discrimination: Title IX/Civil Rights Compliance Officer: Kevin Allen, 425-385-4100, KAllen@everettsd.org, PO Box 2098, Everett WA 98213 Section 504 Coordinator: Dave Peters, 425-385-4063, DPeters@everettsd.org, PO Box 2098, Everett WA 98213 ADA Coordinator: Randi Seaberg, 425-385-4104, RSeaberg@everettsd.org, PO Box 2098, Everett WA 98213

Skilled & Technical Sciences Career Opportunities

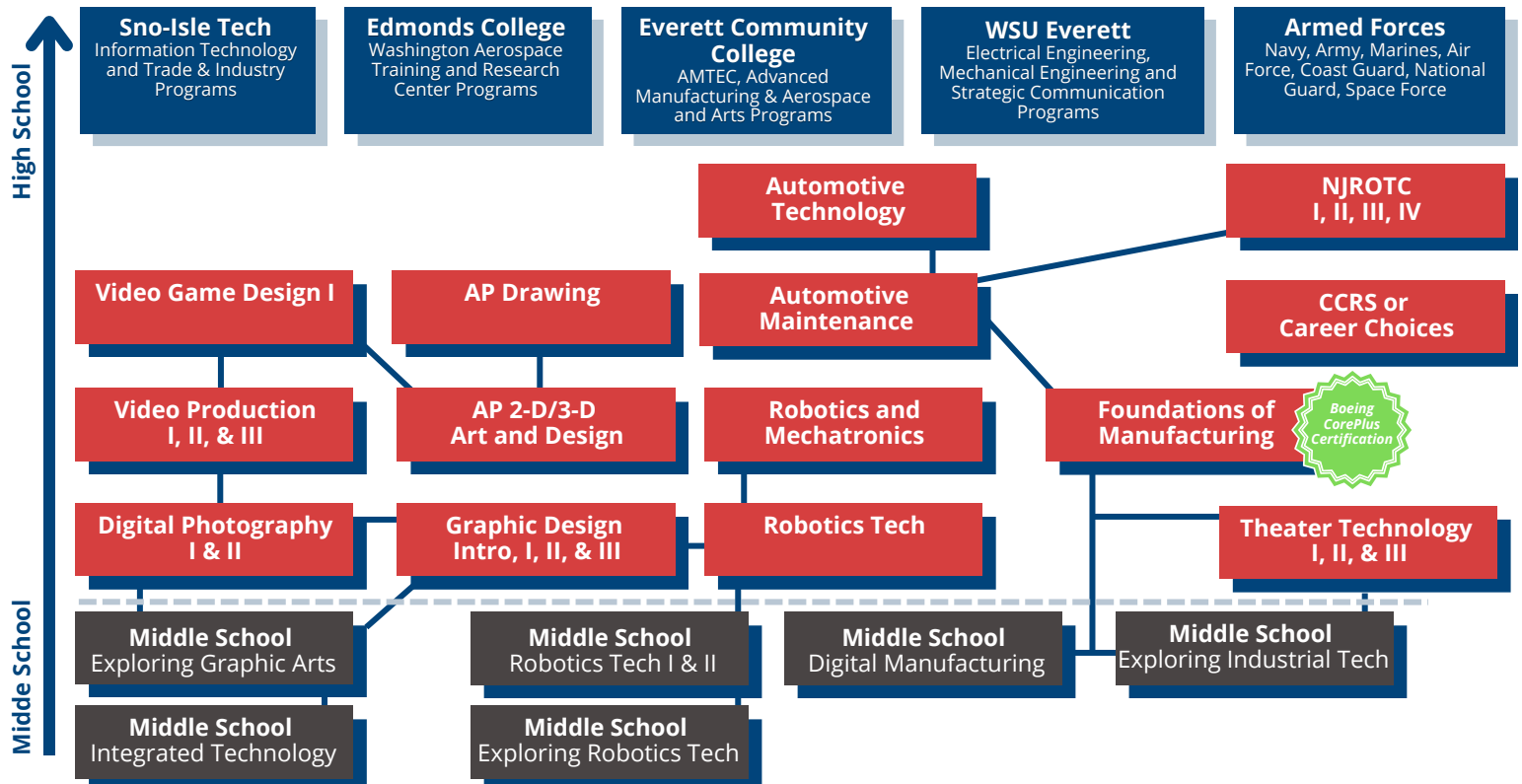
Below are potential jobs and average salaries that you might enjoy based on courses taken in the Skilled & Technical Sciences Pathway.

Packaging Designer ~ \$65,000	Digital Marketing Specialist ~ \$61,000	Automotive Technician ~ \$57,000
Videographer ~ \$109,000	Content Producer ~ \$60,000	Video Editor ~ \$47,000
Manufacturing Technician ~ \$50,000	Manufacturing Engineer ~ \$88,000	U.S. Navy ~ \$73,000

In your High School & Beyond Plan, if you have selected a CTE graduation pathway, you must earn 2.0 credits in that pathway. For **Skilled & Technical Sciences**, choices below are indicated in **red**. This will meet CTE math and ELA graduation requirements.



Out-of-district or local post-high school opportunities:



CTE Graduation Pathways Color Code

- Skilled & Technical Sciences
- Family & Consumer Sciences
- Agriculture Education & Science
- Health Sciences
- Business & Marketing
- STEM

Everett Public Schools does not discriminate in any programs or activities on the basis of sex, race, creed, religion, color, national origin, age, veteran or military status, sexual orientation, gender expression or identity, disability, or the use of a trained dog guide or service animal and provides equal access to the Boy Scouts and other designated youth groups. The following employees have been designated to handle questions and complaints of alleged discrimination: Title IX/Civil Rights Compliance Officer: Kevin Allen, 425-385-4100, KAllen@everettsd.org, PO Box 2098, Everett WA 98213 Section 504 Coordinator: Dave Peters, 425-385-4063, DPeters@everettsd.org, PO Box 2098, Everett WA 98213 ADA Coordinator: Randi Seaberg, 425-385-4104, RSeaberg@everettsd.org, PO Box 2098, Everett WA 98213

STEM Career Opportunities

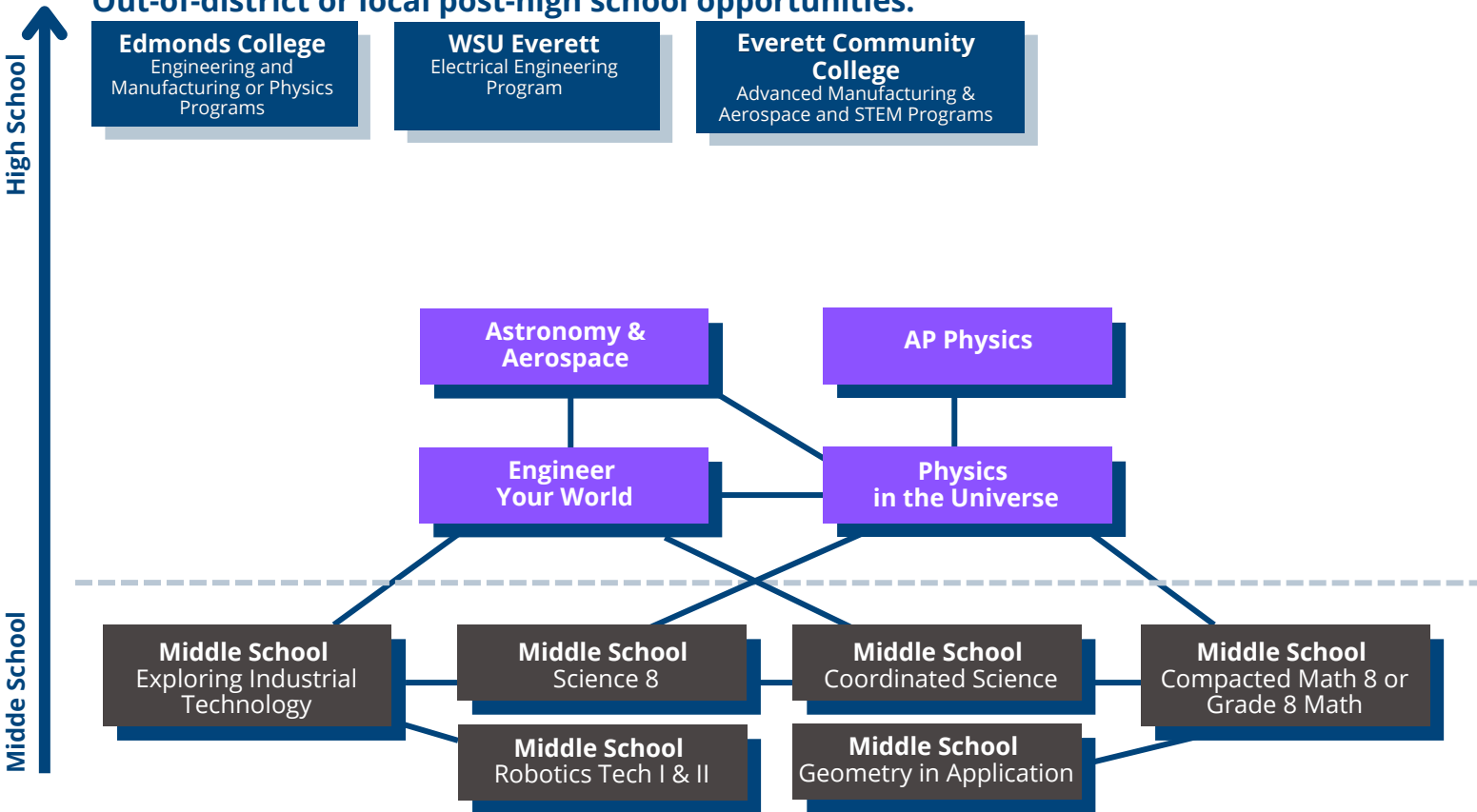
Below are potential jobs and average salaries that you might enjoy based on courses taken in the STEM Pathway.

Astrophysics Researcher ~ \$132,000	Science Data Operator ~ \$95,400	Systems Engineer ~ \$83,000
Civil Engineer ~ \$66,000	Application Engineer ~ \$70,000	Engineering Associate ~ \$50,000
Radiation Physicist ~\$75.00/hr	Aerospace Manufacturer ~ \$65,000	Aerospace Marketing Specialist ~ \$93,400

In your High School & Beyond Plan, if you have selected a CTE graduation pathway, you must earn 2.0 credits in that pathway. For **STEM**, choices below are indicated in **purple**. This will meet CTE math and ELA graduation requirements.



Out-of-district or local post-high school opportunities:



CTE Programs of study

Check out ideas that combine classes in pathways to make a unique program of study that matches your interests!

Do you like helping others?

Are you empathetic?

Patient Care

Health & Wellness

Education

Are you creative?

Do you enjoy digital experiences?

Digital Communication

Web Design

Video Production

Do you enjoy problem-solving?

Do you like designing new things?

Engineering

Advanced Manufacturing

Aerospace

Are you concerned about planet Earth?

Do you like the outdoors?

Community Supported Agriculture

Sustainable Engineering

Natural Resources

Farm to Table

Do you have a great business idea?

Do you want to work for yourself one day?

Business & Entrepreneurship

Accounting

Marketing

Do you enjoy coding?

Is technology your passion?

Information Technology

Video Game Design

Web Design

Robotics Technician

Biotechnology

Patient Care

The programs of study here are just some ideas, but there are many more options you can create.

Remember!

If you selected a CTE Graduation Pathway in your High School & Beyond Plan, you must earn 2.0 credits in that pathway to meet your graduation requirements. Pathways are indicated by their color code.

Have questions? Email your counselor or CTE@everettsd.org for more information.

CTE Graduation Pathways Color Code



Skilled & Technical Sciences



Family & Consumer Sciences



Agriculture Education & Science



Health Sciences



Business & Marketing



STEM

Everett Public Schools does not discriminate in any programs or activities on the basis of sex, race, creed, religion, color, national origin, age, veteran or military status, sexual orientation, gender expression or identity, disability, or the use of a trained dog guide or service animal and provides equal access to the Boy Scouts and other designated youth groups. The following employees have been designated to handle questions and complaints of alleged discrimination: Title IX/Civil Rights Compliance Officer: Kevin Allen, 425-385-4100, KAllen@everettsd.org, PO Box 2098, Everett WA 98213 Section 504 Coordinator: Dave Peters, 425-385-4063, DPeters@everettsd.org, PO Box 2098, Everett WA 98213 ADA Coordinator: Randi Seaberg, 425-385-4104, RSeaberg@everettsd.org, PO Box 2098, Everett WA 98213

Students must meet one math and one English Language Arts (ELA) Pathway as defined in the High School and Beyond Plan.

MATH PATHWAYS

Meet Standard on the SBA
(Minimum score: 2595)
All students take the SBA in 10th grade

Complete and qualify for college credit in a year-long dual credit math course:

- Pre-Calculus
- Statistics
- Running Start Math class (100-level or above)

Earn credit in a year-long high school math transition course:
Bridge to College Math

Earn a C+ or higher in both semesters of a qualifying Advanced Placement (AP) math course OR score a 3 or higher on a qualifying AP math exam:

- AP Statistics
- AP Calculus AB or BC
- AP Computer Science A
- AP Computer Science Principles

Meet standard on the SAT (430) or ACT (16) in math



ELA PATHWAYS

Meet Standard on the SBA
(Minimum score: 2548)
All students take the SBA in 10th grade

Complete and qualify for college credit in a year-long dual credit ELA course:

- UW English Comp: General
- UW English Comp: Literary
- UW English Comp: Humanities
- EvCC English 4
- Running Start English class (100-level or above)

Earn a C+ or higher in both semesters of a qualifying Advanced Placement (AP) ELA course OR score a 3 or higher on a qualifying AP ELA exam:

- AP English Lang & Comp
- AP English Lit & Comp
- AP Psychology
- AP World History
- AP US History
- AP US Gov & Politics
- AP Macroeconomics
- AP Microeconomics

Meet standard on the SAT (410) or ACT (14) in reading, writing, or English

ASVAB Pathway:

Meet standard on the Armed Services Vocational Aptitude Battery (ASVAB)
This pathway meets both math and ELA requirements (Minimum AFQT: 31)



Career Technical Education (CTE) Pathway :

Complete a qualifying sequence of career and technical education (CTE) courses
This pathway meets both math and ELA requirements

Must earn 2.0 credits in one of the following pathways*:

- Agriculture Education & Science
- Business & Marketing
- Family & Consumer Sciences
- Health Science
- Skilled & Technical Sciences
- STEM
- Skill Center programs (Sno-Isle)

*Can use .5 CCRS or Career Choices to complete a CTE pathway
(Example: Health Sciences pathway – 1.0 Anatomy & Physiology, 0.5 Sports Med 1, .5 CCRS)

*Note: Students who pursue these pathways (ASVAB or CTE) do not need to meet English and math requirements separately. English and math content are embedded in both pathways – and a student who meets either the ASVAB standard or the CTE pathway requirements has met the graduation pathway requirement.